

RTI PRODUCT SOLUTIONS



751 Series - Vertical Compression Fixture for PCB and Module Testing

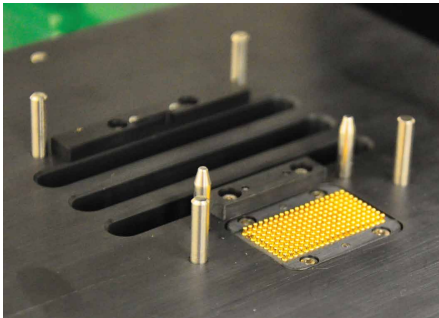
PRODUCT OVERVIEW:

The 751 series vertical compression test fixture is the next step up from the 750. Capable of applying more contact force, the 751 series is perfect for larger modules or PCB's with multiple test points and allows for contact to be made on both the top and bottom of the DUT. Even with its high compression force, It is small enough for benchtop testing.

4 inches of vertical travel distance allows for plenty of room to interchange components while maintaining precision alignment as the fixture is closed.



Example of the fixture with pogo pins in both the base and lid



Example of a spring pin block and alignment pegs to ensure precise contact of pins to test points on DUT



751 during the lid opening process

