



MultiTrace CENTURY

COMPACT DIGITAL CURVE TRACE SYSTEM FOR DEVICES WITH UP TO 96 PINS

PRODUCT OVERVIEW:

The MT Century test system is a lightweight way to provide non-destructive, electrical characterization of packages with up to 96 pins. Automated curve tracing allows for the quick setup and acquisition of curve trace data. Use the MT Century to confirm electrical failure independent of more complex ATE resources. The MT Century family includes 4 models, designed to fit your budget and test requirements. These systems are compatible with existing RTI hardware. Upgrades are available within the Century family.



COMPARE MT CENTURY MODELS:

The following table is a summary and comparison of the four MT Century Curve Tracer models. It is not a complete list of the test system's features.

	2L	4L	4X	6X
Hardware				
No of Switch Matrix Pins	96	96	96	96
No of Switch Matrix Busses	2	3 + 1*	4	6
No of Internal Precision Drives	2	2	4	4
No of Internal Standard Drives		1		2
No of External Standard Drives †	1		2	
No of External High Voltage Drives †	1	1	2	2
Device Complexity				
No of V _{DD} S for Powered Curve Tracing		1	1	2
Standard Applications				
Unpowered Curve Tracing	✓	✓	✓	✓
Powered Curve Tracing		✓	✓	✓
IDDDQ Supply Current Testing		✓	✓	✓
Latch-Up Testing				✓

* One of the four busses tied to GND

† Optional Drive/Bus Box Required For Access

MT CENTURY SOFTWARE:

Every MT Century system is shipped with an LCD monitor, a computer running the essential MT Forms software and Windows® XP Home (upgradeable to XP Professional). MT Forms allows:

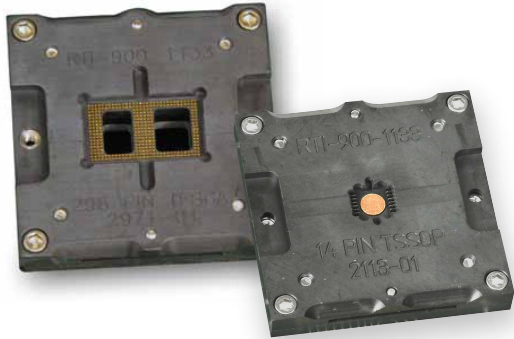
- ◇ Fast and easy test setup
- ◇ 96 pins traced within a minute
- ◇ Comparative testing between DUT and a "known good" device
- ◇ Save pinmaps
- ◇ Save results to .bmp format
- ◇ Print final reports



MultiTrace CENTURY cont.

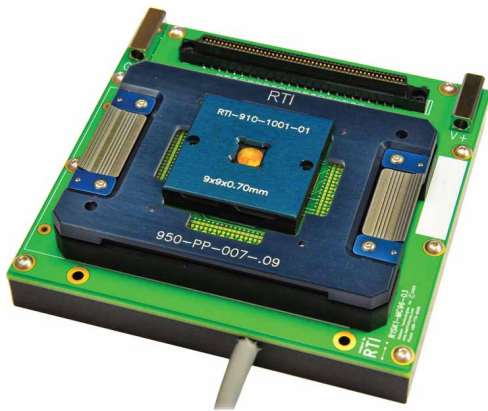


RTI Supplies all of the equipment necessary to get the most from your system
The following examples display a few of our perfectly matched products



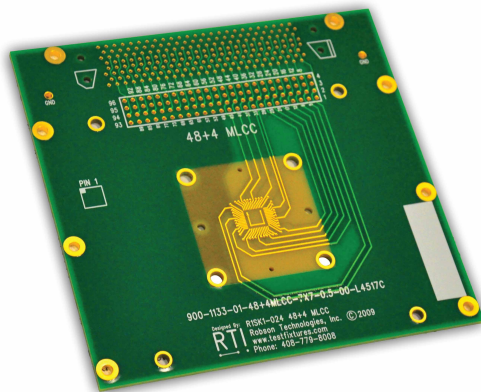
RTI 900 SERIES SOCKETS DESIGNED FOR FA

◆ Available for QFP, BGA, QFN, LGA and most other package types from 1.0mm to 35mm in size and from 0.3mm to over 1.27mm pitches. RTI sockets are designed for: bench test, liquid crystal analysis, ESD testing, photo-emission, back-side emission, micro-probing, and characterization.



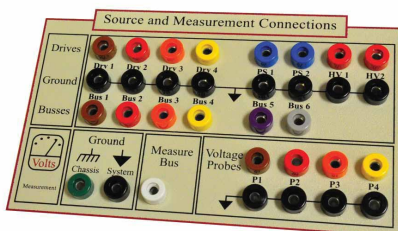
950 SERIES TEST FIXTURES

◆ For maximum flexibility the cable extender is connected to the 950 Series test fixture which can be used with any of the RTI mini boards. Interfacing via pogo pins, the mini boards are configured with device sockets up to 96 pins. The mini board may also be configured with heated bases, heated lids, or heat sink lids as well as a selection of clip on and low profile lids. Depending on the socket, these boards may also be inverted for immediate access to the back side of the package.



R1 BOARDS

◆ These stand alone DUT boards connect directly to the ribbon cable extenders and are used to interface to larger scaled packages and PCB modules. This cost effective option combines the functions of a fixture and DUT board into one assembly.



DRIVE / BUS BOX

◆ This simple accessory features a group of banana jacks that allow direct access to all of the system measurement and source nodes. Excellent accessory for hand testing or jumpering extra SMUs to the fixture to extend the test capabilities