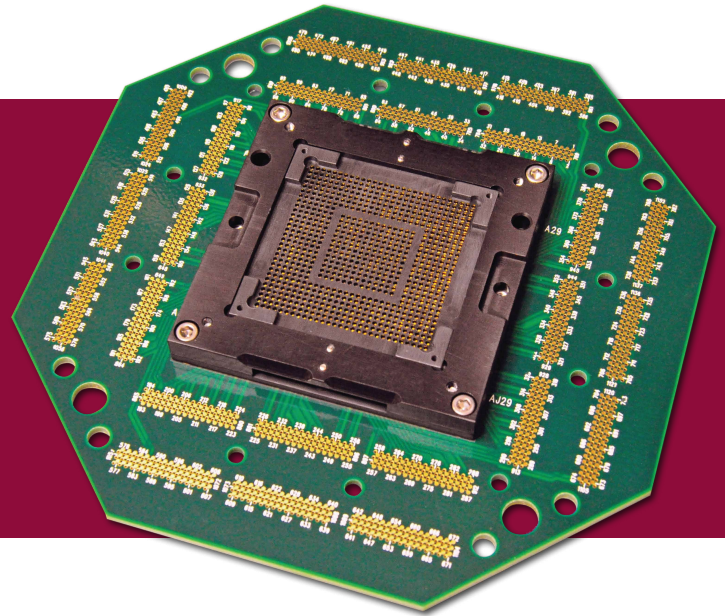




Curve Tracing Fixturing Solutions

OctaPogo Adapters - Universal and Dedicated

- » Test up to 1152 lead devices
- » Daughter card design
- » Local or remote docking capability
- » Compatible with 3rd party test sockets
- » Topside/Backside access
- » Replaceable spring pin blocks

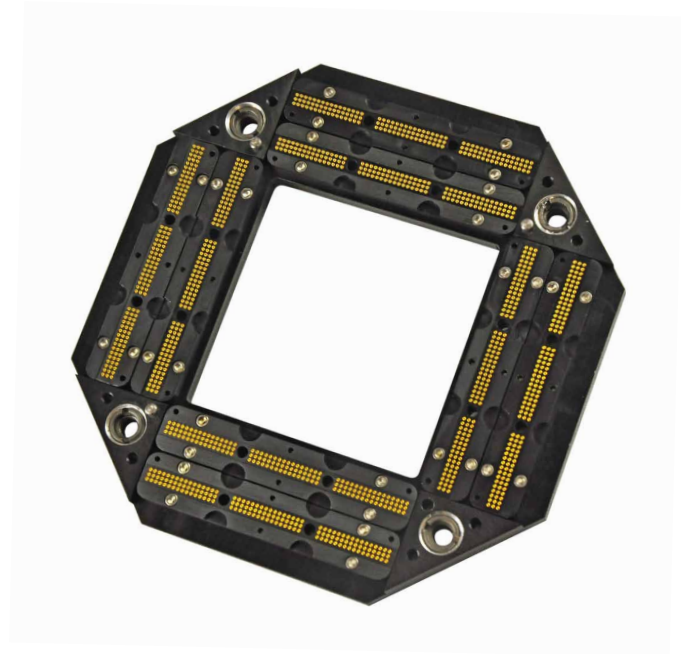


PRODUCT DESCRIPTION

RTI's OctaPogo pin block and daughter boards are the standard interface for RTI's MegaTrace test system and can test devices with up to 1152 contacts. The OctaPogo pin block is made up of 8 smaller pin blocks that can be removed and replaced if necessary. The pin block makes direct contact to pads on the daughter (DUT) board, both of which are easily swapped out.

PRODUCT SPECIFICATIONS

- » 5.5" between short edges, 5.25" between long edges
- » 4 thumb screws supply compression force
- » Boards accept test sockets with footprint up to 2.5"
- » Compression and thru-hole sockets up to 1152 contacts
- » Designed for pitches as low as 0.4mm
- » Replaceable spring pin blocks
- » ULTEM1000 plastic material



METHOD OF INTERFACING

- » Device under test mounted to RTI or 3rd party test socket
- » Test socket mounted to OctaPogo daughter board
- » OctaPogo daughter board compression mounted to spring pin blocks using 4 thumb screws
- » Spring pin terminal block mounted directly to tester or to remote docking fixture with cable interface

COMPATIBLE MODELS

- » Direct and remote mounting to MegaTrace II tester
- » MK2/MK4 load boards
- » Some third part test systems - contact RTI

