

RTI SEMI-CUSTOM SPRING PIN SOCKETS



PRODUCT DATA SHEET

PRODUCT OVERVIEW:

Available for QFP, BGA, QFN, LGA and most other package types from 1.0mm to 35mm and from 0.3mm to over 1.27mm pitches. RTI standard pogo pin sockets can be designed to test most standard and custom package types. RTI standard sockets are designed for: bench test, liquid crystal analysis, ESD testing, photo-emission, back-side emission, micro-probing, characterization, low-volume engineering as well as product test. In addition to these standard sockets, RTI offers custom sockets for most any semiconductor or hybrid package.



Multi Test Site 900-1133 Series
Test Socket Base Without Lid

SOCKET FEATURES:

- ◆ Available for most package types
- ◆ 0.3mm to over 1.27mm pitch
- ◆ Multiple lid styles available to meet most any requirement
- ◆ Multiple types of pogo pins are available to meet most requirements (lead-free, low inductance, high force, high current, Kelvin testing, etc).
- ◆ Very low profile lids available for micro-probing and liquid crystal analysis.

OUR MOST POPULAR SOCKETS (MANY OTHERS ARE AVAILABLE):

Socket Series	Socket Size (in.)	Floating Base	Max Package Size (mm)	Lid Styles Available					USE		
				1	2	3	4	5	FA	ENG	PROD

BGA PACKAGES

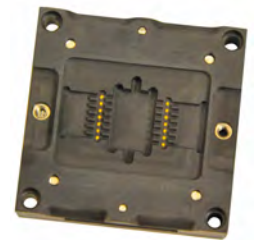
900-1150	1.0 X 1.0	Yes	14 x 14	✓	✓				✓	✓	✓
900-1133-BGA	1.5 X 1.5	No	22 x 22	✓	✓	✓	✓	✓	✓	✓	
900-1141	1.5 X 1.5	Yes	18 x 18	✓	✓	✓	✓	✓	✓	✓	✓
900-1166	2.0 X 2.0	Yes	28 x 28	✓	✓			✓	✓	✓	✓
900-1152	2.25 X 2.25	Yes	35 x 35	✓	✓			✓	✓	✓	✓
900-1161	0.9 X 0.9	Yes	10 x 10	✓	✓				✓	✓	✓

QFP PACKAGES

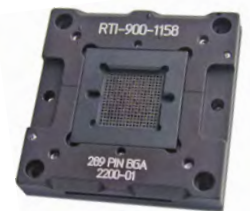
900-1133-QFP	1.5 X 1.5	Yes	22 x 22	✓	✓	✓	✓		✓	✓	
900-1130	1.5 X 1.5	Yes	30 x 30	✓	✓				✓	✓	✓

QFN and OTHER LEADLESS PACKAGES

900-1161	0.9 x 0.9	No	10 x 10	✓	✓				✓	✓	✓
900-1133-QFN	1.5 X 1.5	No	22 x 22	✓	✓	✓	✓	✓	✓	✓	
900-1137	2.0 X 2.0	No	32 x 32	✓	✓			✓	✓	✓	



900-1133 Dual Flat Pack



900-1158 BGA Socket

RTI STANDARD POGO PIN TEST SOCKETS



PRODUCT DATA SHEET (CONTINUED)

OUR MOST POPULAR SOCKET LIDS:

TYPE	DESCRIPTION	TYPICAL USE
1	FA Screw-Down Open-Top	FA, Micro Probing, Liquid Crystal
2	Dual Latch Clip-On	Engineering, Production Set Up
3	Dual-Latch Push-down Clam-Shell	Low Volume Production
4	FA Adjustable Clip-On Open-Top	FA, Micro probing, Liquid Crystal
5	Engineering Adjustable Clip-On	Engineering, Low Volume Production
6	Screw down Quartz Window FA	100% die exposure, EMMI and Laser

OTHER OPTIONS INCLUDE:

- ◆ Open socket bases for back-side emission
- ◆ Low inductance pins for RF characterization and test
- ◆ High force pins for lead free packages
- ◆ Pockets under sockets for component placements
- ◆ Custom lids (heated, heat sinks, etc.)
- ◆ 100% plastic, no metal sockets and lids



900-1166: 121 BGA Socket With Custom Lid



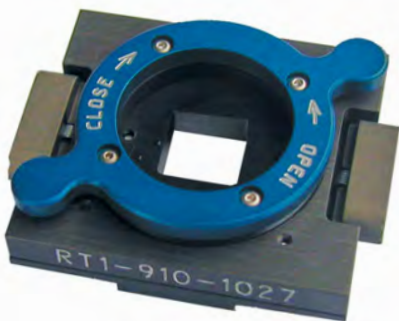
Type 1 Lid: 910-1001
FA Screw-Down



Type 2 Lid: 900-1002
Dual Latch Clip-On



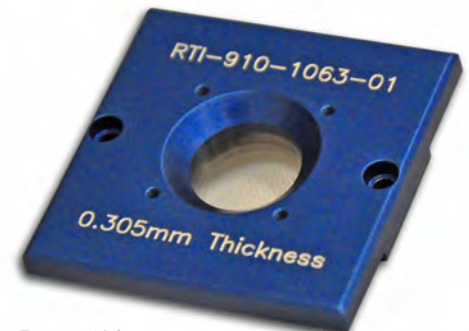
Type 3 Lid: 910-1013
Dual Latch Push Down Clam Shell



Type 4 Lid: 910-1027
FA Adjustable Clip-On-Open Top



Type 5 Lid:
ENG-Low Volume Production



Type 6 Lid:
Screw down quartz glass FA