

RTI UNIVERSAL SOCKET SERIES



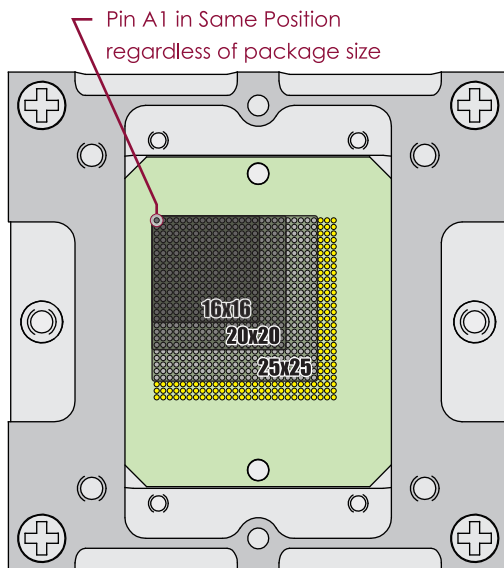
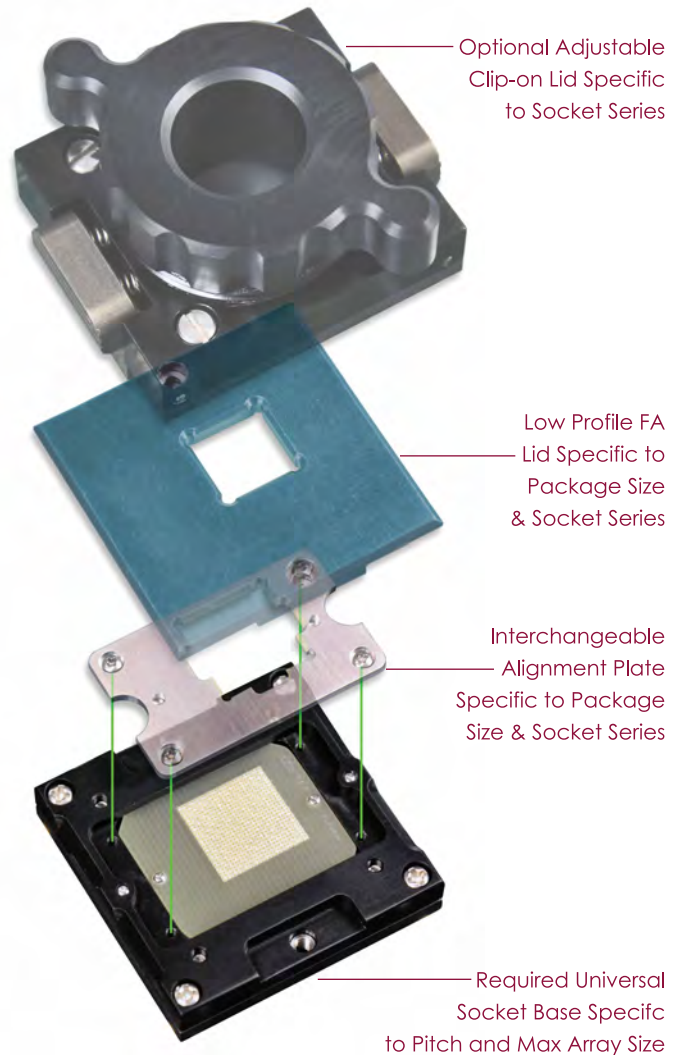
900-1192, 900-1188, 900-1189 FA/Engineering Sockets & Accessories

S2-DS5

PRODUCT OVERVIEW:

RTI's universal sockets are a cost effective solution when tests need to be performed on multiple package sizes within the same ball pitch. Available pitches range 0.4mm through 1.27mm.

The first step is to determine which socket is needed, based on the DUT's pitch and maximum array size. Keep in mind that multiple DUTs of smaller arrays with the same pitch can be used in the same socket base. A one time purchase of a universal socket is made after choosing the appropriate series. Universal, clip-on, adjustable lids specific to socket series are also available. All that is left to purchase is a low cost alignment plate and corresponding open top lid specific to each *package size* that will be tested. A new universal socket will have to be purchased only when the need to test a new package of a *different pitch* arises.



PRODUCT FEATURES:

- ◆ The adjustable clip-on lid and easily removable alignment plate make switching between package types a quick and easy process.
- ◆ All sockets use the same footprint with pin A1 in the same physical location relative to the alignment pins of the socket. This allows for "universal daughter cards" to be used.
- ◆ Multiple array sizes are available for each pitch.
- ◆ Custom sizes & centered patterns are also available.

RTI STANDARD POGO PIN TEST SOCKETS



PRODUCT DATA SHEET (CONTINUED)

PRODUCT SPECIFICATIONS:

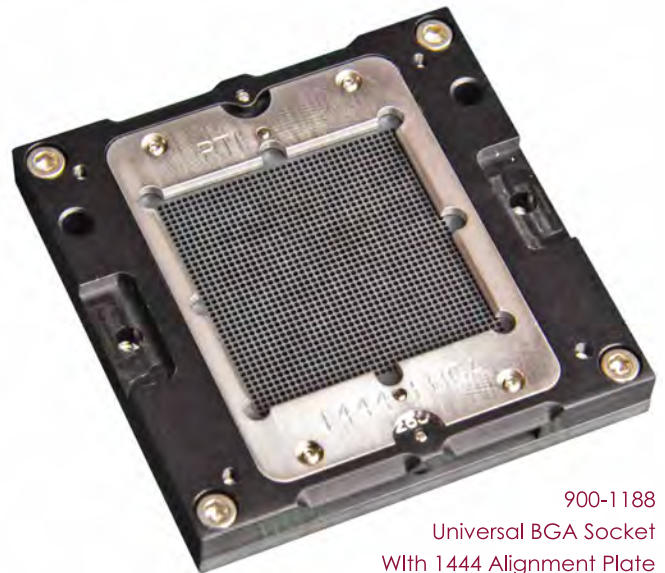
| SOCKET SERIES | SOCKET SIZE | PACKAGE PITCH | MAX SIZE OF ARRAY | MAX SIZE OF PACKAGE | STANDARD ARRAY SIZES (mm) |
|---------------|-----------------|---------------|-------------------|---------------------|---------------------------|
| 900-1192 | 1.5in x 1.5in | 0.4mm | 28x28 | 17mm | 10, 16, 20, 25, 28 |
| | | 0.5mm | 32x32 | 17mm | 10, 16, 20, 25, 28, 32 |
| | | 0.8mm | 20x20 | 17mm | 10, 16, 20 |
| 900-1188 | 2.25in x 2.25in | 0.8mm | 38x38 | 34mm | 28, 32, 38 |
| | | 1.0mm | 31x31 | 34mm | 16, 20, 31 |
| | | 1.27mm | 24x24 | 34mm | 26, 20, 24 |
| 900-1189 | 2.75in x 2.75in | 1.0mm | 45x45 | 50mm | 35 |
| | | 1.27mm | 35x35 | 50mm | 35 |

*RTI also stocks standard daughter cards for most of the above sockets. Contact RTI for details.

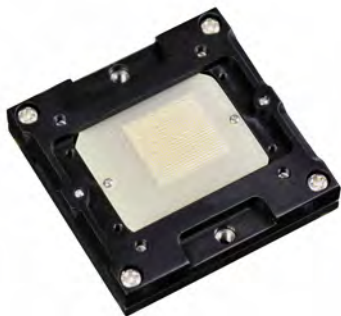
*Custom array sizes and pin populations available

ACCESSORY FEATURES:

- ◆ The alignment plate and lid can be used on any array that has the minimum required number of pins. Example: A 14x14 array alignment plate and lid can be used on a socket of appropriate pitch and array 14x14 or larger.
- ◆ Multiple lids for the same socket may be required depending on package thickness.
- ◆ For smaller pitch packages, multiple alignment plates may be required depending on distance from package edge to center of nearest solder ball.



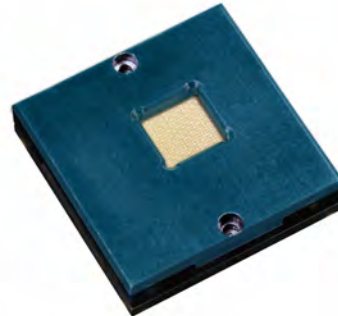
900-1188
Universal BGA Socket
With 1444 Alignment Plate



900-1192 Socket Base
One Time Purchase



900-1192 With
Custom Alignment Plate



900-1192 With
Corresponding FA Lid



900-1192 With
Standard Adjustable Lid